

Our Integrated Continuum of Care



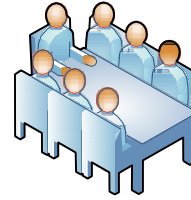
Inpatient Services

Co-Occurring Disorder Unit
340 Thompson Road
Webster

Inpatient Behavioral Health Unit
100 South Street
Southbridge

The Inpatient Harrington CDU provides treatment for individuals with mental health issues compounded by substance use disorders.

The Inpatient mental health unit is a place where patients can get the support and treatment that they need in a safe, therapeutic environment.



Partial Hospitalization Program

Co-Occurring Disorder PHP
340 Thompson Road
Webster

Behavioral Health PHP
29 Pine Street
Southbridge

Harrington's two established Partial Hospitalization Programs are typically available after discharge from an acute program or as a diversion from inpatient hospitalization. Our Southbridge location specializes in primary mental health and our Webster location in co-occurring disorders.



Intensive Outpatient Program

IOP
176 Main St, Southbridge
340 Thompson Rd, Webster

Our Intensive Outpatient Program allows patients with substance use disorder to continue their therapies on a part-time yet intensive schedule designed to accommodate work and family life.

**Psychiatric
Emergency
Services /
SHIFT
Program**

↔

**Addiction
Immediate
Care**

For patients in the Emergency Room experiencing significant difficulties, **Psychiatric Emergency Services** offers crisis intervention, referral, and support for adults and children, and the **SHIFT program** coordinates Medication Assisted Treatment and community support for those with opioid use disorders. **AIC** is our new model of urgent care for those with substance use disorders, with the ability to provide a full range of MAT and an immediate connection to the appropriate level of support in the continuum

**16 Bed
Residential/
Clinical
Support for
adults with
co-occurring
disorders**

Outpatient Services

<div style="border: 1px solid black; padding: 5px; background-color: #c8e6c9;"> <p>Adult Behavioral Health - 29 Pine St, Southbridge - 10 N. Main St, Charlton</p> </div> <p>Providing treatment for adults and couples experiencing a wide range of mental health disorders and life stressors.</p>	<div style="border: 1px solid black; padding: 5px; background-color: #c8e6c9;"> <p>Child and Family Behavioral Health - 139 South St, Southbridge - 10 N. Main St, Charlton</p> </div> <p>Therapies including play, art, cognitive behavioral and family treatment by therapists who specialize in children & adolescents experiencing difficulties.</p>	<div style="border: 1px solid black; padding: 5px; background-color: #c8e6c9;"> <p>School Based Services</p> </div> <p>Seeing children at their school means it's not necessary for parents to leave work or make after hours appointments.</p>	<div style="border: 1px solid black; padding: 5px; background-color: #c8e6c9;"> <p>Drug Court Services</p> </div> <p>Clinical services integrated with three regional courts to provide intervention and support for individuals with addiction and psychiatric disorders.</p>	<div style="border: 1px solid black; padding: 5px; background-color: #c8e6c9;"> <p>Recovery Services - 176 Main St, Southbridge - 367 E. Main St, E Brookfield - 340 Thompson Rd, Webster</p> </div> <p>All aspects of addiction recovery including medication management, relapse prevention and individual and group therapy</p>
---	---	--	---	---